

ORREJÓN CLASS

VIVIENDA 50

Nº DORMITORIOS	3
SUP. CONSTRUIDA APROX. VIV	167,28 m ²
SUP. PARCELA	155,91 m ²

ESPACIOS INTERIORES

1	SALÓN-COMEDOR-COCINA	44,06 m ²
2	HALL	4,66 m ²
3	ASEO	2,75 m ²
4	ESC 1	5,03 m ²
5	PASILLO	3,45 m ²
6	DOR.P	16,37 m ²
7	DOR.1	12,32 m ²
8	DOR.2	11,13 m ²
9	BAÑO P	4,46 m ²
10	BAÑO 1	3,25 m ²
11	ESC 2	5,01 m ²
12	DISTRIB.	2,03 m ²
13	BODEGA	20,65 m ²
14	TRASTERO	4,06 m ²

ESPACIOS EXTERIORES

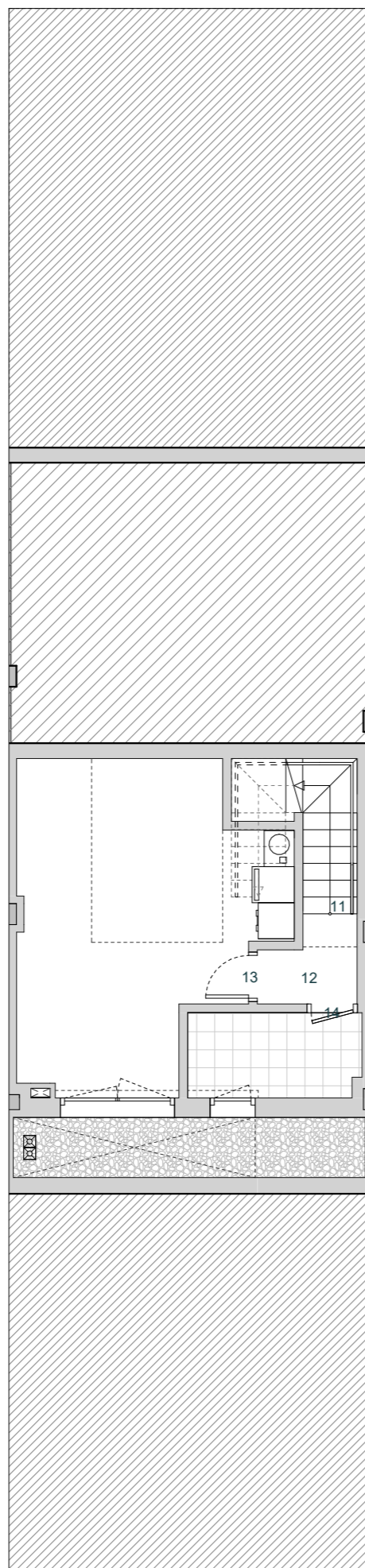
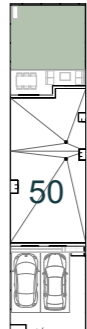
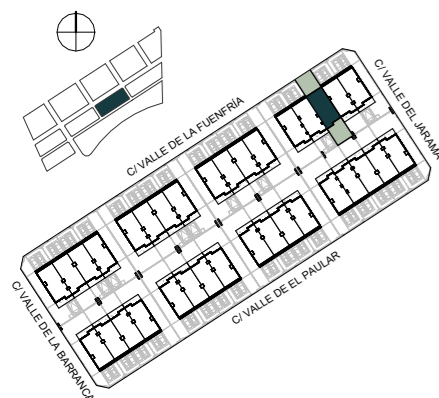
15	PORCHE	12,00 m ²
16	JARDIN	31,42 m ²
17	ACCESO	10,76 m ²
18	SOLERA	29,52 m ²

SUPERFICIE TOTAL VIVIENDA 222,72 m²

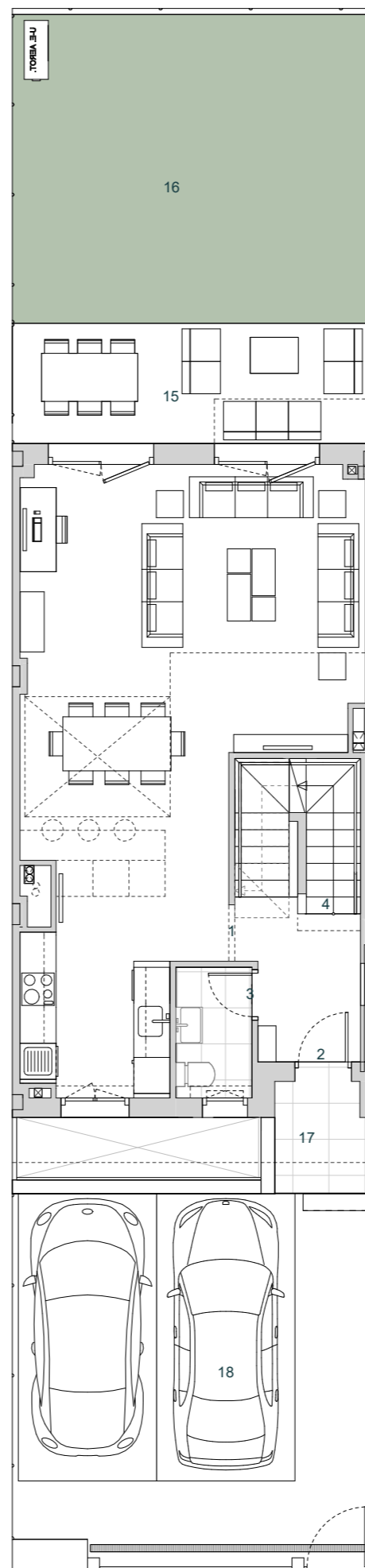
ESCALA 1/100 

ESQUEMA DE LOCALIZACIÓN

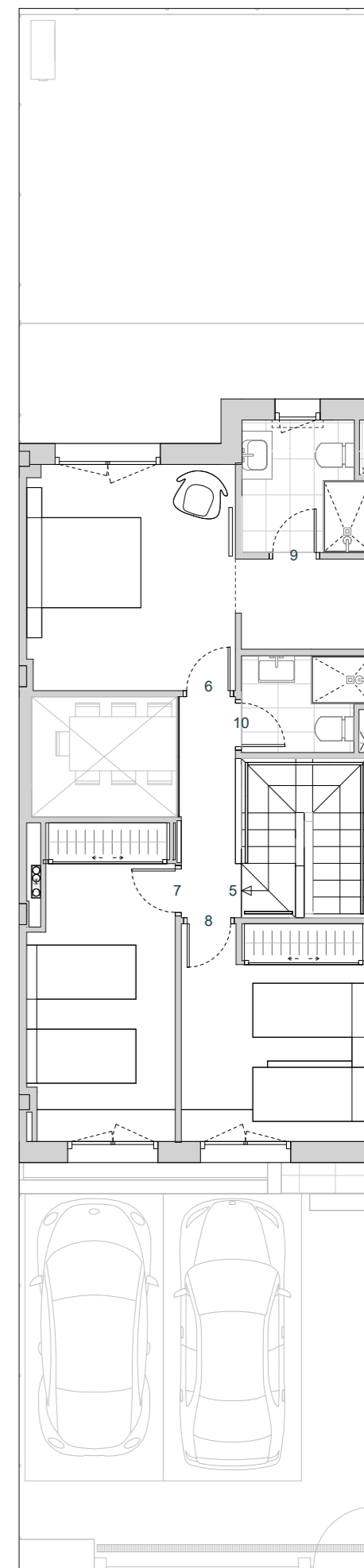
PARCELA



PLANTA SÓTANO



PLANTA BAJA



PLANTA PRIMERA

