



## VIVIENDA 15

Nº DORMITORIOS	3
SUP. CONSTRUIDA APROX. VIV	167,43 m <sup>2</sup>
SUP. PARCELA	155,93 m <sup>2</sup>

### ESPACIOS INTERIORES

1	SALON-COMEDOR-COCINA	44,17 m <sup>2</sup>
2	HALL	4,80 m <sup>2</sup>
3	ASEO	2,76 m <sup>2</sup>
4	ESC 1	5,02 m <sup>2</sup>
5	PASILLO	3,45 m <sup>2</sup>
6	DOR.P	16,47 m <sup>2</sup>
7	DOR.1	12,58 m <sup>2</sup>
8	DOR.2	11,13 m <sup>2</sup>
9	BAÑO P	4,52 m <sup>2</sup>
10	BAÑO 1	3,25 m <sup>2</sup>
11	ESC 2	4,80 m <sup>2</sup>
12	DISTRIB.	2,03 m <sup>2</sup>
13	BODEGA	20,83 m <sup>2</sup>
14	TRASTERO	4,04 m <sup>2</sup>

### ESPACIOS EXTERIORES

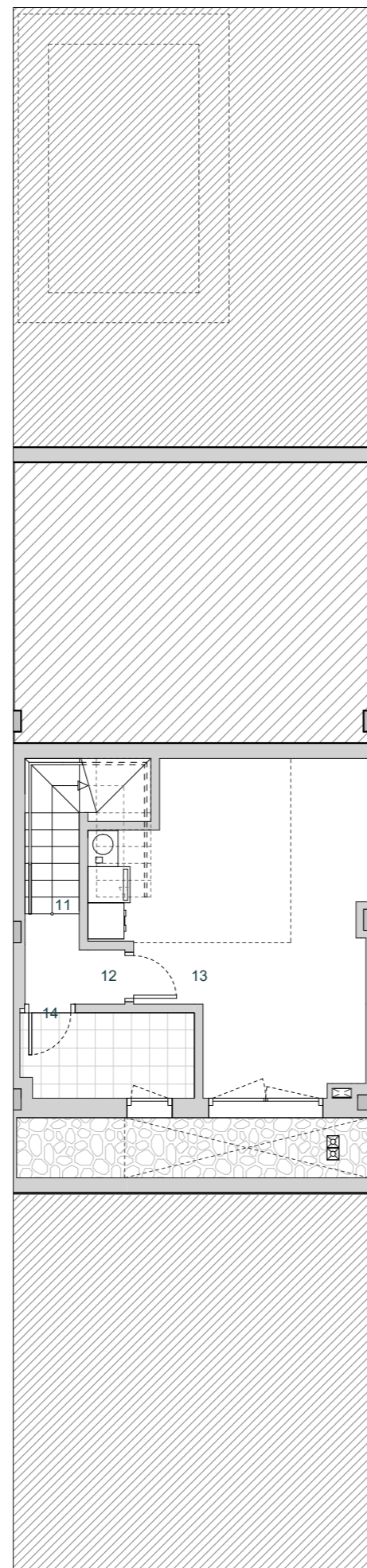
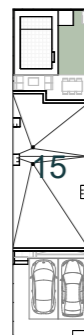
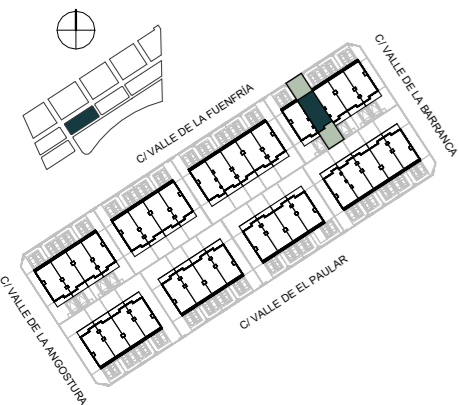
15	PORCHE	12,00 m <sup>2</sup>
16	JARDIN	30,85 m <sup>2</sup>
17	ACCESO	10,75 m <sup>2</sup>
18	SOLERA	29,42 m <sup>2</sup>

**SUPERFICIE TOTAL VIVIENDA** 222,87 m<sup>2</sup>

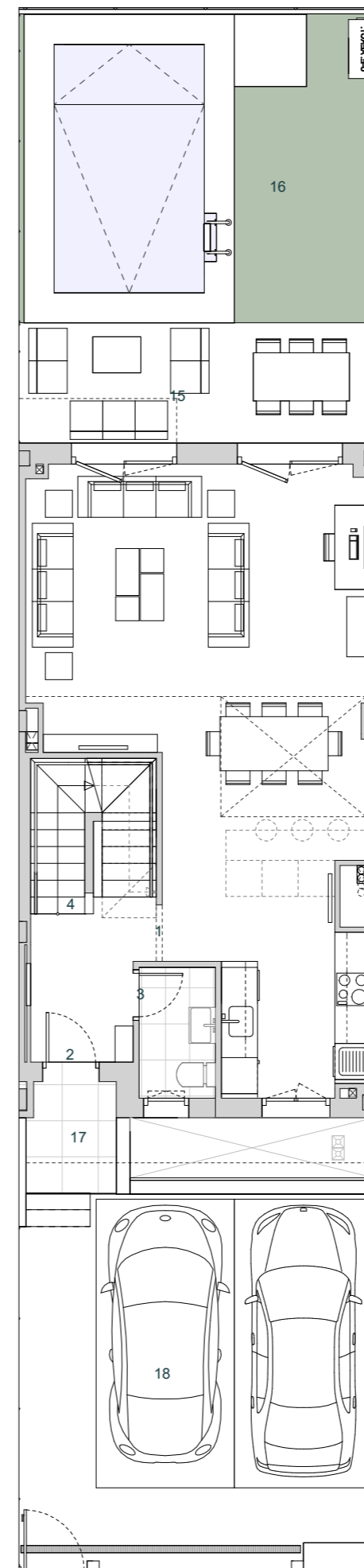
ESCALA 1/100

ESQUEMA DE LOCALIZACIÓN

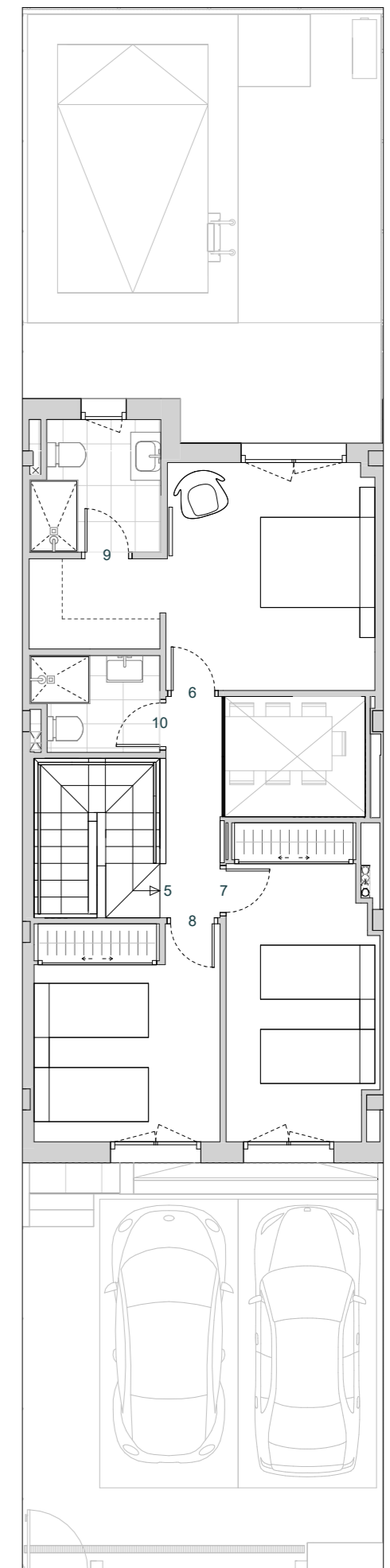
PARCELA



PLANTA SÓTANO



PLANTA BAJA



PLANTA PRIMERA

